



Lunsford Lane, Larkfield, Aylesford, Kent, ME20 6HR  
Offers Over £390,000



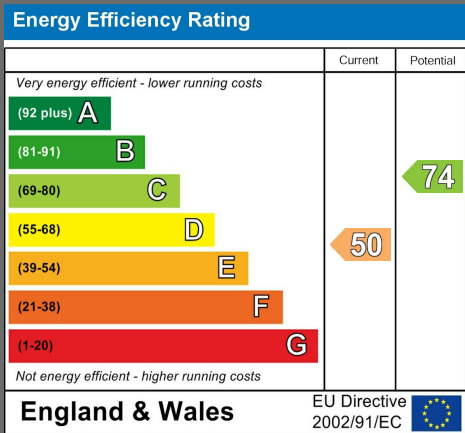
No Forward Chain

This well-presented 3-bedroom semi-detached house is located in the established area of Larkfield and features a separate 1-bedroom annexe cabin. Perfectly positioned near local amenities, schools with convenient access to the M20 (junction 4), it's also a short drive from West Malling train station with connections to Victoria and Charing Cross.

The main house offers spacious lounge with a log burner, a dining room, a kitchen/breakfast room, a utility, and a handy cloakroom/WC on the ground floor. Upstairs, there are three bedrooms and a family bathroom. Externally, the front of the property features a driveway with space for 3-4 cars and side pedestrian access to the rear garden.

The standout feature is the detached 1-bedroom annexe cabin, which includes an open-plan lounge and kitchen, a separate bedroom, and a bathroom. This is ideal for either a young or elderly relative. Additionally, there is a garage located en bloc, offering further storage and convenience.

- No Forward Chain
- Well Presented Semi Detached House
- Detached One Bedroom Annexe Cabin
- Three Bedroom
- Lounge With Log Burner
- Kitchen/Breakfast Room
- Ground Floor Cloakroom
- First Floor Bathroom
- Garage En Block
- Good Sized Driveway







## LOCAL AREA INFORMATION FOR LARKFIELD

Larkfield is a sought after area thanks to its convenient access to so many things.

For recreation you have the local leisure centre at Larkfield, many parks, green spaces and countryside close by. Leybourne Lakes and Manor Park are particularly noteworthy.

There are a good range of shops, supermarkets and eateries in Larkfield (including Martin's Square). West Malling is the closest town (less than 2 miles away) and is one of the most attractive small towns in mid-Kent with a wide main street lined on each side by a fine collection shops and eateries. Maidstone is approximately 5 miles away.

For the commuter Junction 4 of the M20 gives access to the motorway network. There are mainline train stations at nearby West Malling, Aylesford and East Malling.

For education there is a comprehensive range of primary, grammar and private educational opportunities. For more schools information please visit [www.kent-pages.co.uk/education](http://www.kent-pages.co.uk/education) or ask for a Page & Wells Key Facts for Buyers Guides.

## ADDITIONAL INFORMATION

Freehold  
Council Tax Band D  
EPC Rating E  
Double Glazing  
Gas Central Heating (Main House)  
Loft  
One Bedroom Annexe Cabin (Open Plan Kitchen/Lounge / Bedroom / Shower Room)  
Garage En Block



**Lunsford Lane, Larkfield, Aylesford, Kent**

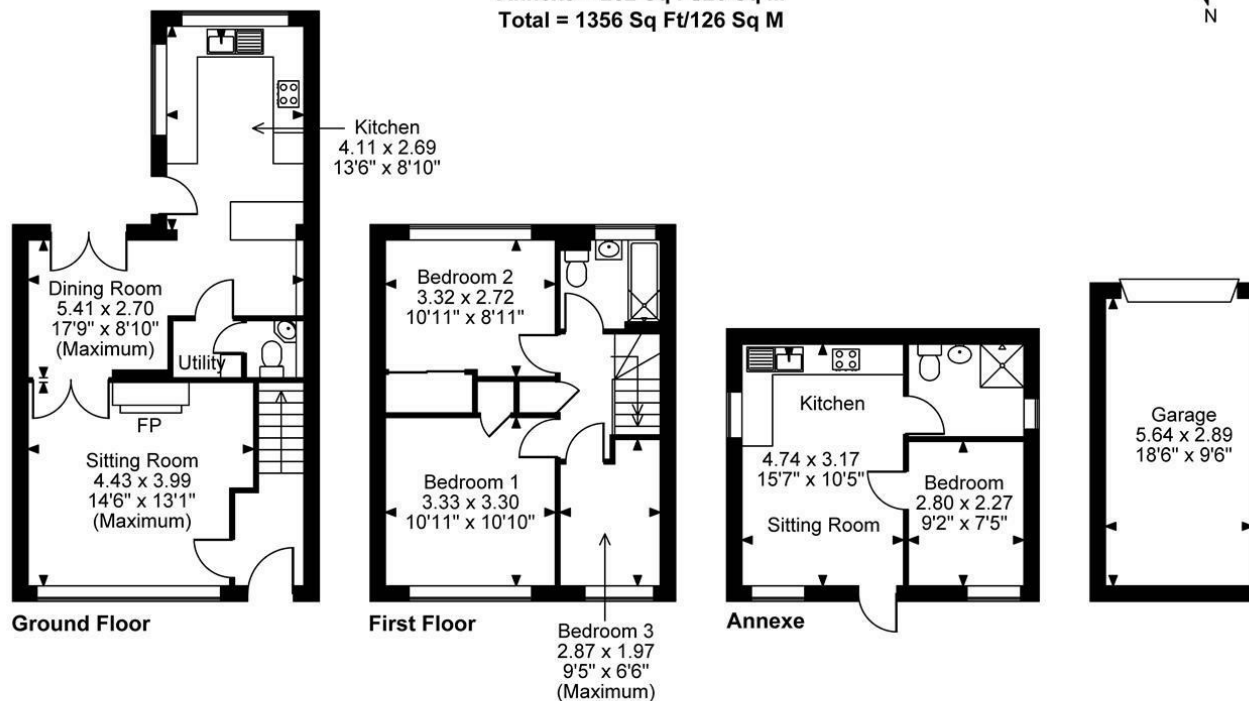
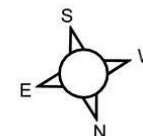
**Approximate Gross Internal Area**

**Main House = 899 Sq Ft/84 Sq M**

**Garage = 175 Sq Ft/16 Sq M**

**Annexe = 282 Sq Ft/26 Sq M**

**Total = 1356 Sq Ft/126 Sq M**



**FOR ILLUSTRATIVE PURPOSES ONLY - NOT TO SCALE**

The position & size of doors, windows, appliances and other features are approximate only.

© ehouse. Unauthorised reproduction prohibited. Drawing ref. dig/8625510/SS

Page & Wells limited for themselves and for the vendors of this property whose agents they are give notice that: 1. These particulars do not constitute any part of, an offer or a contract. 2. All statements contained in these particulars as to this property are made without responsibility on the part of Page & Wells Limited or the Vendor. 3. None of the statements contained in these particulars as to the property is to be relied on as statements or representations of fact. 4. Any intending purchaser must satisfy himself by inspection or otherwise as to the correctness of each of the statements contained in these particulars. 5. The vendor does not make or give, and neither Page & Wells Limited nor any person in their employment has any authority to make or give any representation whatsoever in relation to this property. These particulars are supplied on the understanding that all negotiations are carried out throughout Page & Wells Limited. Properties with a reference prefixes EAA are those which Page & Wells Limited disclose an interest in accordance with the provisions of the Estates Agents Act 1979

